



(219) 326-0014  
(800) 483-7700  
www.solidwastedistrict.com

Summer 2020

# "one man's trash..."

Solid Waste District of La Porte County

Your guide to reducing, reusing, and recycling

## Did you know?

The Solid Waste District of La Porte County offers a variety of services to provide safe and responsible recycling and waste disposal for our residents. The District supports and adheres to Indiana Governor Holcomb's orders to address coronavirus (COVID-19) safety concerns. Please visit our website, [www.solidwastedistrict.com](http://www.solidwastedistrict.com), for up-to-date details on our programs throughout the summer, as they may need to be modified to meet the governor's orders.

**Curbside household recycling:** We provide wheeled carts for curbside pickup of combined household recyclables — no need to sort — paper, cardboard, metal, plastics, and glass. Although we usually allow excess recycling to be bagged and placed next to the totes, we may be unable to pick up any items that are not inside of your recycling totes to keep our workers safe. Visit our website for details.

**Electronics recycling:** Did you know that computers, TVs, phones, printers, microwaves, and most gadgets with a plug should not be placed into the trash? Drop off these items for recycling and keep their hazardous components out of the landfill. Bring your unwanted electronics to our location in Michigan City or La Porte for FREE recycling year-round, or drop them at one of our mobile collection events. Visit our website, [www.solidwastedistrict.com](http://www.solidwastedistrict.com), for details.



**Household Hazardous Waste (HHW) disposal:** Leftover household products that can catch fire or react or that are corrosive or toxic need to stay out of your trash and recycling carts. These products should never be poured on the ground or down drains, either. Products, such as paints, cleaners,



oils, batteries, and pesticides, can contain hazardous ingredients and require special care when you dispose of them. Safely dispose of HHW at one of our collection events listed in the "Mark your calendars!" box on this page.

**Yard waste drop-off and sale of mulch and compost:** Our Compost Site located at 724 Zigler Road in La Porte will accept all yard waste, including branches, grass clippings, and leaves. No plastic bags or trash are to be left at the area. A limited amount of mulch and compost is offered for sale. Visit [www.solidwastedistrict.com](http://www.solidwastedistrict.com) or call 219-326-0014 for additional information.

**5-in-1 collection events:** Twice a year, the Solid Waste District conducts a large-scale collection of several types of waste at the La Porte County Fair Grounds. The five categories of items we collect at these events are: tires, appliances, electronics, household hazardous waste, and documents for confidential shredding. A small fee is charged only for the tire collections. Participation in all other collections is FREE! 5-in-1 collection event dates and details are listed in the "Mark your calendars!" box.

**ClearStream event recycling bin loan program:** We have free, portable recycling collection bins and bags to loan to groups and individuals to encourage recycling at their events. ClearStream bins are available year-round. Contact us at 219-326-0014 for details.

Visit [www.solidwastedistrict.com](http://www.solidwastedistrict.com) or call 219-326-0014 for more information on all of our services, as well as adjustments we may need to make to meet coronavirus (COVID-19) safety concerns.



## Turner Talks Trash from the Executive Director's Desk

**Thank you!** Our world rapidly adjusted to a new way of life during the pandemic this spring — including how we recycled and disposed of waste. We want to give a big thank you to our residents, who protected the hardworking people collecting our waste and recycling by staying home, washing your hands before taking your carts to the curb, and working with us as we temporarily altered our services and operations to keep our workers and communities safe. So many of you also boosted the spirits of our waste and recycling workers by writing cards, making "thank you" signs, sending food, and showing your appreciation throughout this unprecedented time.

The adjustments we made to maintain waste and recycling service during the coronavirus (COVID-19) situation, while also keeping everyone safe, were made possible by all of our employees who came to work and did their jobs safely. For months, our teams worked long hours to serve our communities during the crisis, from answering an increased number of phone calls to driving routes with fewer employees. While many of you stayed home or worked from home, these essential workers showed up to keep our communities clean and sustainable, and we want to give them a special thank you for their hard work. If you want to show your appreciation for waste and recycling industry employees, not just for the work they have done during the pandemic but every day, set up signs in your yard or windows or email [sgeeburns@solidwastedistrict.com](mailto:sgeeburns@solidwastedistrict.com) and we'll be sure to share your thanks.

We're excited to announce that most of our services, drop-off centers, and facilities are now operating on their normal schedules.

While coronavirus changed a lot for us, everyone did their part, so we kept our essential workers safe and flattened the curve. Let's do our part to keep recycling and support our communities as we all begin to rebuild. We look forward to seeing you this summer!

*Clay*

THE WORLD IS MOVED ALONG, NOT ONLY BY THE MIGHTY SHOVELS OF ITS HEROES, BUT ALSO BY THE AGGREGATE OF TINY PUSHES OF EACH HONEST WORKER. ~ HELEN KELLER



### HHW Collection • Saturday, July 11, 9 a.m. to 2 p.m. Michigan City Marquette Mall, West Parking Lot

Household Hazardous Waste Only, such as household, lawn, and automotive chemicals, oil-based paints, batteries, fluorescent bulbs, sharps, and medications

### Electronics and HHW Collection • Saturday, August 8, 9 a.m. to 2 p.m. Kankakee Valley REMC, 8642 W. Highway 30, Wanatah

Electronics and Household Hazardous Waste, such as household, lawn, and automotive chemicals, oil-based paints, batteries, fluorescent bulbs, sharps, and medications

### 5-in-1 Collection • Saturday, September 19, 9 a.m. to 2 p.m. La Porte County Fair Grounds, 2581 W. State Road 2

Tires, Appliances, Electronics, Confidential Document Shredding, and Household Hazardous Waste, such as household, lawn, and automotive chemicals, oil-based paints, batteries, fluorescent bulbs, sharps, and medications

**Need up-to-date information?** Visit our website, [www.solidwastedistrict.com](http://www.solidwastedistrict.com); find us on the La Porte County Solid Waste District Facebook page; follow us on Twitter @LPCoRecycling; and check out local newspapers. We work hard to keep you informed.





## Protecting yourself and your neighbors

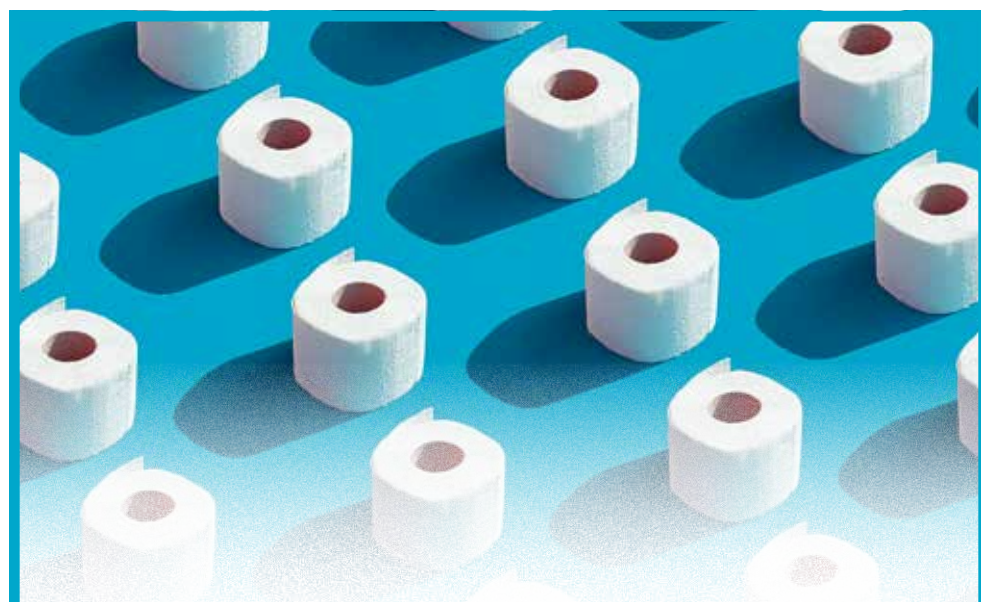
Unfortunately, as more people are using disposable masks, gloves, and disinfecting wipes to protect themselves and their families, those items are being littered in parking lots and parks. This litter has negative impacts on the environment, especially wildlife and waterways. It also creates a risk of spreading coronavirus (COVID-19) to other people who come across it or pick it up to properly dispose of it. Using personal protective equipment is a good idea, but please dispose of it properly. Follow these simple guidelines:

- Disposable disinfecting wipes – trash can
- Disposable plastic gloves – trash can
- Disposable masks and face coverings – trash can
- Tissues and paper towels – trash can
- Baby and toilet wipes – trash can (Do NOT flush these or other wipes!)

Keep a small trash bag or an old grocery bag in your car and dispose of any wipes, gloves, or masks that you used on the trip inside that bag. Tie it shut, and when you get home, drop your bagged disposable protective gear into your trash can. If you used washable gloves and masks, place them in the laundry when you return home.

Please bag all trash (household garbage, food waste, diapers, soiled tissues and wipes, disposable gloves and masks, etc.) before placing it into your waste cart or bin. The lid should be closed on your curbside trash container and no waste should be outside of the container (on the top of the lid or on the ground). Bagging your trash and keeping the lid closed on the container help reduce litter and protect workers.

If you see littered gloves or masks, do not pick them up with your bare hands. Wear gloves to pick up litter and then discard your disposable gloves in the trash or wash reusable gloves. Always wash your hands after picking up any litter, even if you were wearing gloves.



## Fun Fact:

**58% of the fiber in toilet paper and other tissue products comes from clean, recycled paper, such as newspaper, household papers, and paperboard boxes. When you are recycling paper at home or work, you are an important part of the toilet paper supply chain!**

## Recycling: *Back to the Basics*



Recycling correctly is more important now than ever! Due to the coronavirus (COVID-19) pandemic, our supply chain is now more dependent than ever before on your recyclables. As recycling from commercial businesses like restaurants and offices decreased or disappeared, residential recycling increased, serving as an important supply for recyclable commodities. Manufacturers rely on used cardboard and paper to make shipping cartons and food packaging, as well as tissue products like toilet paper. Aluminum beverage cans are needed to create new cans, and plastic, steel, and glass are critical in making many additional products, including hospital beds, ventilators, and other critical supplies.

During the time at home, most people created more trash, in some areas as much as 30% more than normal, as we did all of our working, learning, playing, and eating at home. We also relied more on non-recyclable, single-use products, including masks, gloves, and disinfecting wipes, to stay safe. With more products used around the house, it can be easy to start “wishcycling” and put items we “wish” could be recycled into our bins. But these contaminating items can ruin an entire load of recyclables — whether they are dirty recyclables or non-recyclables. For example, a half-full plastic bottle can destroy a lot of recyclable paper. And of course, some items, such as diapers, masks, plastic gloves, wipes, tissues, or paper towels, can introduce bacteria, or even the coronavirus, into the load, putting workers who sort recycling at a high risk.

The facilities that process the recyclables from your curbside cart can only process the materials on our accepted recyclables list. They cannot process other materials! Let's go “back to the basics” of what is accepted for recycling in your container and what is not.

### What DOES go in my recycling bin?

- **Paper:** newspaper, magazines, catalogs, phone books, office paper, envelopes (plastic removed), junk mail, ads, cardboard (flattened), food boxes (liners removed), paper bags, etc. – No plastic-laminated, food-soiled, or waxed paper. Remove any plastic windows from envelopes or food boxes, such as pasta boxes.
- **Metal Cans:** aluminum, tin, or steel beverage and food cans
- **Plastic Bottles and Jugs:** plastic food and liquid containers with their lids on, such as soda and water bottles,

detergent bottles, milk and water jugs, and juice bottles

- **Glass:** bottles and jars only – Glass must be emptied and rinsed. – NO drinking glasses, ceramics, dishes, mirrors, window glass, or light bulbs

### What does NOT go in the recycling bin?

- Hinged produce containers, takeout containers, and other clamshells
- Foamed polystyrene (Styrofoam)
- Plastic bags and bubble wrap
- Plastic pumps, like those from hand sanitizer or disinfectant spray bottles
- Toys
- Clothing or shoes
- Yard trimmings, grass clippings, leaves, or plants
- Wood products, such as lumber, tree trimmings, and furniture
- Tires or rubber materials
- Dangerous or hazardous materials, such as oil-based paints, solvents, cleaning products, pool and garden chemicals, medicine, sharps and needles, thermostats, tanks, ammunition, and batteries
- Any recyclable item that's not empty, clean, and dry
- Dirty, food-soiled, or wet paper or cardboard, including coffee cups, tissues, wipes, diapers, and paper towels

### Other recycling tips

- When you collect accepted recyclables, remember to keep them loose in your cart — don't bag them.
- Don't overfill the cart. The lid on your cart should be able to close. If you have extra recycling, save it for the next collection.
- Make sure every recyclable is empty, clean, and dry before you place it in the cart.
- Just because an item isn't accepted in your cart doesn't mean it has to be headed straight to the trash. Reuse as many items as you can to get additional uses from them before they are discarded.
- Donate usable household goods, such as toys, clothes, shoes, usable pots and pans, and more.
- Begin composting yard trimmings and leaves in your backyard or drop them off at our Compost Site on Zigler Road.

For more information about becoming a better recycler, visit [www.solidwastedistrict.com](http://www.solidwastedistrict.com).





It's easy to grasscycle your lawn clippings. All you need is the mower you have at home. It can be a gas, electric, or reel mower. Simply remove the bagging attachment and, if needed, insert a safety device over the grass chute. If there isn't a bag attached to your mower, you're already set to grasscycle. Mow as usual, letting the grass fall back onto your lawn.

When you mow regularly, the clippings are small and break down quickly. The clippings serve as mulch and help reduce evaporation of water from the soil. Grasscycling can also provide up to a quarter of the nitrogen needed by your lawn, which can save money on lawn treatments. In addition, you will avoid the cost of buying bags and eliminate the hassle and time spent bagging the clippings and taking them to the curb. You can feel good about not taking up landfill space

**grass-cy-cling** – noun – leaving chopped grass clippings on a mowed lawn to add nutrients and moisture to the soil

with useful, biodegradable organic material too. Here's the best part — grasscycling saves you time! When you aren't stopping to remove, empty, and reattach

the grass catcher, you will spend 40% less time mowing. That leaves you more time for outdoor activities that are more fun for you, whether that is gardening, walking, reading a book on the porch, or playing a game with the kids.

La Porte County residents can drop off yard waste at no charge at the Compost Site, located north of the Fairgrounds, across from NIPSCO, at 724 Zigler Road in La Porte. Businesses may also drop off yard waste but will be charged a tipping fee. Green waste drop-off days and times vary by season, so please visit our website at [www.solidwastedistrict.com](http://www.solidwastedistrict.com) or call 219-363-8962 for current details.

Questions about curbside yard waste pickup?

La Porte residents – Contact the La Porte City Street Department at 219-362-2477. Michigan City residents – Contact Michigan City Central Services at 219-873-1530.

Reuse reflections

By Sacha Gee-Burns  
Environmental Educator/Public Outreach Coordinator

For many of us, the warm weather motivates us to toss items that clutter our spaces and cause us stress. This is a wonderful concept, unless you are like me and see a potential project in every item. I could probably count on one hand the number of times I have thrown out something that was still useful.

There are plenty of options with everything. Years ago, the motor went out on my washing machine. While I gave the machine to a scrapper, I kept the inside drum and turned it into a planter. I lined it with garden fabric so the soil wouldn't fall out through the drainage holes and then filled the bottom third with lightweight material, like foam plastic packing peanuts or crumbled-up newspaper. I have had countless people stop over and ask where I got my unique planter. When I tell them it is the tub from an old washing machine, they start realizing that everyday items can be turned into wondrous things, including planters.

The hierarchy of waste reduction goes like this: Reduce, Reuse, Repurpose, and then Recycle. If we look at how much waste we create these days, it is easy to see that we need to rethink how we are doing things. As consumers, we need to take a hard look at which products are truly the better buy —



not only for us, but for our environment. I love when I find something that avoids plastic altogether, such as lotion bars. If we don't have the plastic containers, we won't be filling up our recycling totes as quickly before each pickup. If we don't have the lotion bottle, we won't have to spend time figuring out what else we can do with it or recycle it. By reducing the amount of materials we purchase and then

discard, we can really reduce waste. Flower pots are a bit tricky, because if they are a #6 plastic (the number inside the recycling triangle), they can't be recycled through our curbside recycling program. However, you can take them to the garden center at Lowe's and they will recycle them, even if you bought the original plants somewhere else. Often, schools or churches will take gardening items for their own gardens or a plant sale.

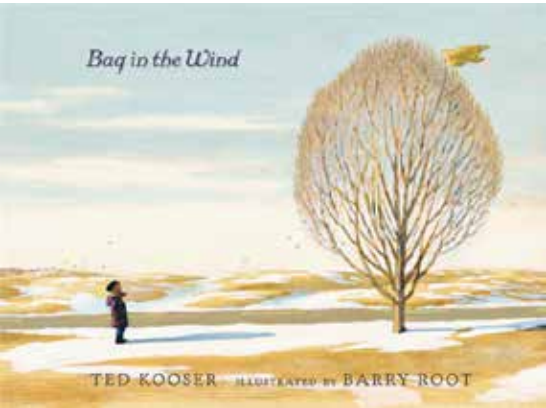
As you can probably tell, Reuse and Repurpose are my favorites. I love the challenge of figuring out how else I can make use of something. And, if I am at a loss, I do a simple internet search and find hundreds of ideas within seconds. Before you toss items in the trash, take a moment to see whether you can somehow repurpose them in your garden or in other areas of your life.

Your child's favorite, new bedtime story

Escape your daily grind and travel along with your child as the protagonist is buffeted by the winds of fate, interacting with a diverse cast of characters. Wonder how the differing goals of each character affect the destiny of our hero.

Writing a compelling saga about an inanimate object like a bag seems far-fetched. However, that is exactly what Ted Kooser does with his book, *Bag in the Wind* (Candlewick Press, 44 pages). This feat seems more plausible once you learn that Kooser is a past Poet Laureate and Pulitzer Prize winner. Along with illustrations by Barry Root, Kooser's text will engage your youngster's imagination.

Without noticing, your child will learn about waste, reuse, and recycling. Litter, poverty, and homelessness are also touched upon, as well as kindness and charity.



Goal-setting plays a major role in a surprising plot twist. You really will care about this bag and want to see how the story ends. At the end of the book, you'll find two pages of facts and action items specific to the problems of single-use plastic bags. However, the story itself will generate conversations about all of these other issues. Like any good children's book, it educates as it entertains and instills values as it provides an opportunity for shared quality time.

Meet the Author: Ted Kooser



How old were you when you first became interested in environmental issues? Why?

I don't know when I became interested, but it may have been in the 1960s when we young people were questioning everything about "the establishment."

How has writing children's books been different than writing poetry?

The simplest way to describe the difference is that a children's story is narrative — something happens over a period of time — whereas nearly all lyric poetry describes something that happens at one moment. There is, of course, narrative poetry, but I've written very little of that.

What has been your favorite feedback or experience from writing children's books?

I love to see my words illustrated by the kind of talented illustrators Candlewick chooses. I have always loved illustrated books and it's a thrill to have some of my own.

What do you find most gratifying, personally, about the life you have lived?

I love it when I get "fan mail" from readers who have been pleased with something I've written, and I'm lucky in that I get one or two letters a week. And I always reply because I want those people to understand how important it is to me that I have reached them through my work.



# Curbside Recycling Schedule

- A

City of La Porte – South of Hwy. 2 and West of Monroe (Hwy. 4); North of Hwy. 2 and West of Hwy. 35
- B

City of La Porte – East of Hwy. 4 and South of Hwy. 2, including Kankakee Township; East of Hwy. 35 and North of Hwy. 2 to Brighton Street
- C

City of La Porte – East of Hwy. 35 and North of Brighton Street; Town of Westville; New Durham Estates Mobile Home Community; Cass Township; Dewey Township; Hanna Township; Prairie Township
- D

Clinton Township; Noble Township; Scipio Township; Town of Wanatah
- E

Johnson Township; Lincoln Township; Pleasant Township; Union Township; Washington Township
- F

Michigan City – South of 12, South of MLK Drive, West of Karwick Road; Pottawattamie Park; Village Green
- G

Michigan City – North of 12, North of MLK Drive, East of Karwick Road; Springfield Township; Long Beach; Michiana Shores; Shoreland Hills; Beach Walk; Green Acres; Sheridan Beach
- H

Coolspring Township; New Durham Township (excluding the Town of Westville and New Durham Estates); Weatherstone Village; Terrace Acres
- I

Center Township (outside city limits)
- J

Galena Township; Hudson Township; Wills Township; Trail Creek (Michigan City); Rolling Prairie Mobile Home Park

**Recycle Toter Reminders:**

Place at curb by 6 a.m. of pickup day.

Locate toter at least 4 feet from items such as mailboxes, trees, or parked vehicles.

If recycling pickup is missed, please call 219-326-0014 within 24 hours. We will get a truck back out to you!

**NOTE:** Township is outside of City limits. Never remove toter from assigned address.

July						
Sun.	Mon.	Tues.	Weds.	Thurs.	Fri.	Sat.
1			1	2	3	4
			H	I	J	Holiday No Service
5	6	7	8	9	10	11
	A	B	C	D	E	
12	13	14	15	16	17	18
	F	G	H	I	J	
19	20	21	22	23	24	25
	A	B	C	D	E	
26	27	28	29	30	31	
	F	G	H	I	J	

August						
Sun.	Mon.	Tues.	Weds.	Thurs.	Fri.	Sat.
						1
2	3	4	5	6	7	8
	A	B	C	D	E	
9	10	11	12	13	14	15
	F	G	H	I	J	
16	17	18	19	20	21	22
	A	B	C	D	E	
23	24	25	26	27	28	29
	F	G	H	I	J	
30	31					
	A					

September						
Sun.	Mon.	Tues.	Weds.	Thurs.	Fri.	Sat.
		1	2	3	4	5
		B	C	D	E	
6	7	8	9	10	11	12
	Holiday No Service	F	G	H	I	J
13	14	15	16	17	18	19
	A	B	C	D	E	
20	21	22	23	24	25	26
	F	G	H	I	J	
27	28	29	30	31		
	A	B	C			



## LAPORTE COUNTY RECYCLING

Solid Waste District

**District Board Members**

Mayor Tom Dermody – Chair

Commissioner Rich Mrozinski – Vice Chair

Commissioner Dr. Vidya Kora

Commissioner Sheila Matias

Councilman Mike Mollenhauer

Mayor Duane Parry

Councilman Don Przybylinski

**Citizen’s Advisory Committee**

Justin Kiel – Chair

Jennifer Olson – Vice Chair

Amy Feikes – Secretary

Paul Brooks

Juli Charlesworth

Jim Irwin

Jim Micheals

Dick Reel

**Staff**

Clay Turner, Executive Director

Robin Havens, Office Manager

Lisa Woodson, Recycling Coordinator

Sacha Gee-Burns, Environmental Educator and Public Outreach Coordinator

Lyn DeGroote, Controller

Scott Lynn, Program Coordinator

Vincent Sherman, Compost Site Project Coordinator

Ryan Kiel, Public Site Coordinator



[www.facebook.com/LPCoRecycling](https://www.facebook.com/LPCoRecycling)

[www.twitter.com/LPCoRecycling](https://www.twitter.com/LPCoRecycling)

[www.youtube.com/LPCoRecycling](https://www.youtube.com/LPCoRecycling)

[www.lpcorecycling.tumblr.com](https://www.lpcorecycling.tumblr.com)

Green E-Club: <http://eepurl.com/eiyHs>

**We want your suggestions, questions, and comments!**

**Solid Waste District of La Porte County**

2857 W. State Road 2

La Porte, IN 46350

(219) 326-0014 • (800) 483-7700

[www.solidwastedistrict.com](http://www.solidwastedistrict.com)

Copyright© 2020

The Solid Waste District of La Porte County and Eco Partners, Inc.

All rights reserved.



PLEASE RECYCLE AFTER READING.



## Got plastic bags?

Clean, dry plastic bags can be dropped off for recycling at stores where plastic bag receptacles are in place. Please call stores to see if they have temporarily stopped accepting items during this time. No plastic bags of any kind are allowed in the recycling toter. Thank you!

## Get the latest info delivered right to the palm of your hand!

Download our Waste & Recycling App to receive real-time communication on Emergencies, Delayed Collections, Events and more.

